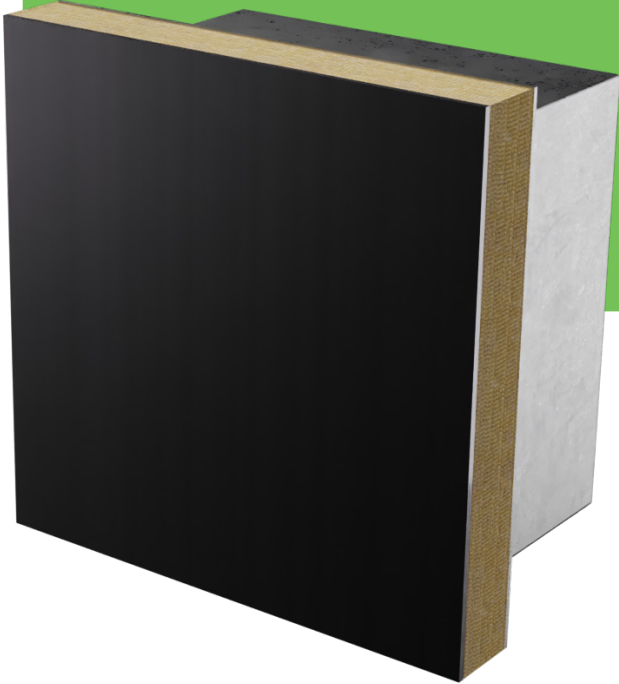


Product Data Sheet

# Matrix™ SP Spandrel Panel

A2 s1 d0 RATED



## Matrix SP

Matrix SP is an insulated spandrel panel suitable for glazing into any standard curtain wall or window system. The product comprises of multiple layers, with key elements tested to meet minimum A2 s1 d0 standards.

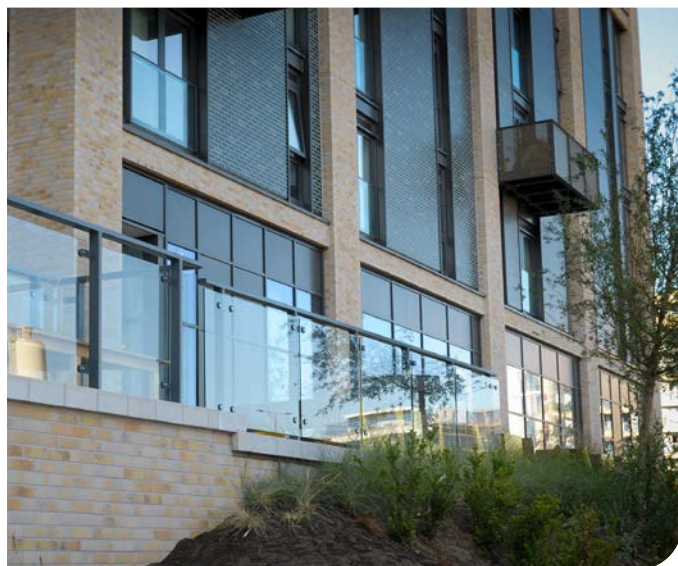
### Panel Sizes

PSP offer panels up to 6000 x 2000mm, subject to your Structural Engineers calculations

### Thermal Performance

Panels are available in various depths to suit project requirements. Examples of indicative values are:

- 32mm thick core = 1.0 W/m<sup>2</sup>k
- 140mm thick core = 0.26 W/m<sup>2</sup>k
- 200mm thick core = 0.18 W/m<sup>2</sup>k



### Acoustic Performance

By varying the thickness of the material, different levels of sound reduction can be achieved.

### Environment

All material has the potential to be recycled, except for the powder coating and adhesive.

### Technical assistance

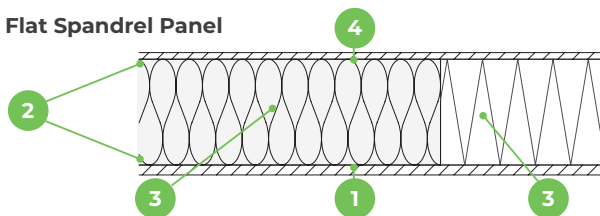
Please speak to our technical team who can offer guidance to help you understand your options and make an informed decision.

**Anodised and Polyester Powder Coated finishes available - please contact us for sample requests.**

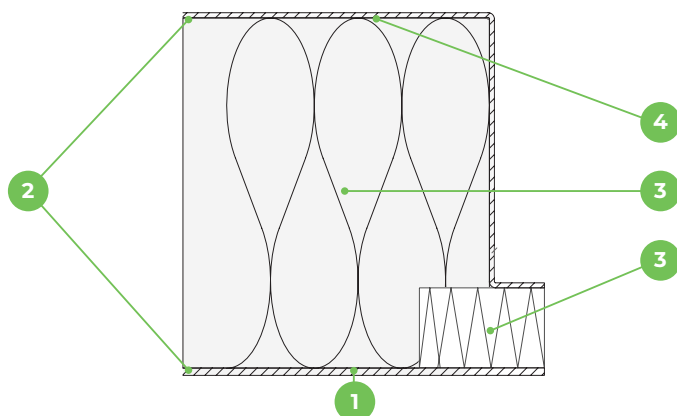
## Matrix SP Spandrel Panel



Flat Spandrel Panel



Top Hat Shaped Spandrel Panel



- 1 Panel Outer Skin**  
PPC finished to Qualicoat standard on aluminium in 2-3mm thickness.
- 2 Adhesive**  
Tested to A2 s1 d0 and applied under strict factory conditions to comply with the EN 13501-1 test standard.
- 3 Panel Core & Edge Insulation**  
High-density mineral wool A1 rated around the perimeter of the panel, with medium density at the core.
- 4 Panel Inner Skin**  
The inner skin can be provided as a flat surface or as a top hat profile to suit U-value requirements.

Standard details available on request.

## Available colours

Sample colours available on request. Standard range of anodised and PPC finishes offered.



The details and information contained in this publication are correct at the point of going to press. PSP Group reserves the right to change details and specifications without prior notice. No responsibility is assumed for errors or misinterpretations resulting from the information contained in this publication. **For full Terms and Conditions click here.**

For more information contact our sales team: [enquiries@pspuk.com](mailto:enquiries@pspuk.com)

**PSP Group** Unit 11, All Saints Industrial Estate, Shildon County Durham DL4 2RD | **T: 01388 770490**

