

Product Data Sheet

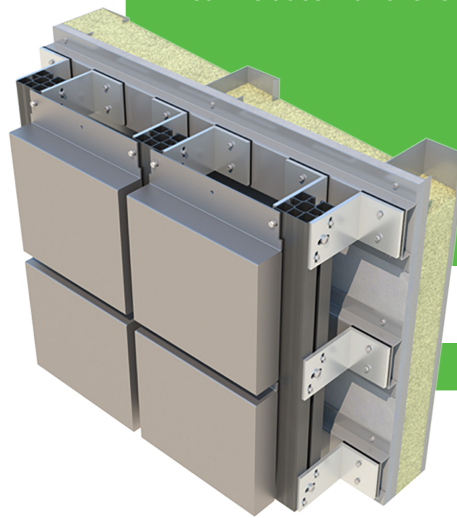
Matrix SFM Rainscreen Cladding

The CWCT tested Matrix SFM (Secret Fix with Mullions) rainscreen system is based on Matrix SF but includes mullions for structural support.

Our rainscreen facade systems provide an aesthetically pleasing external envelope solution whilst also offering rapid installation times. PSP provide a comprehensive range of integrated metal rainscreen facade systems that can be adapted to suit specific client needs and provide a solution for almost any building type.

The CWCT tested Matrix SFM rainscreen system is a high tolerance fabricated panel generally supplied in 3mm thick which is dictated by the material type and panel size.

Special features, pressings and louvers can be manufactured from single skin material ensuring it matches that of the panels.



Material warranties and EPD available on request

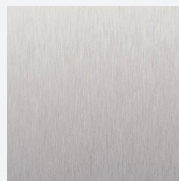
Materials & Finishes



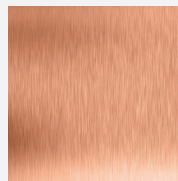
Aluminium



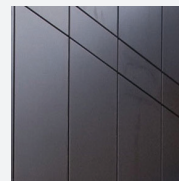
Pre Coated
Aluminium



Anodised
Aluminium



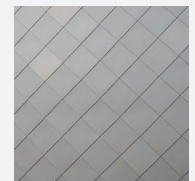
Copper*



Colour Coated
Steel



Rimex Stainless
Steel*



Zinc*

*Material EPD's available on request



This rainscreen system is ideal for integrating perforations into the panel; these can be designed to integrate anything from uniform lines to random patterns or pictures.

PSP's Matrix SFM rainscreen system is available in a range of materials such as COR-TEN®, Stainless Steel and Aluminium. The most suitable type of secondary support structure is generally dictated by the panel orientation along with the ability to incorporate thermal and floor movements where required.



Technical Specifications

EPDs are available on request.

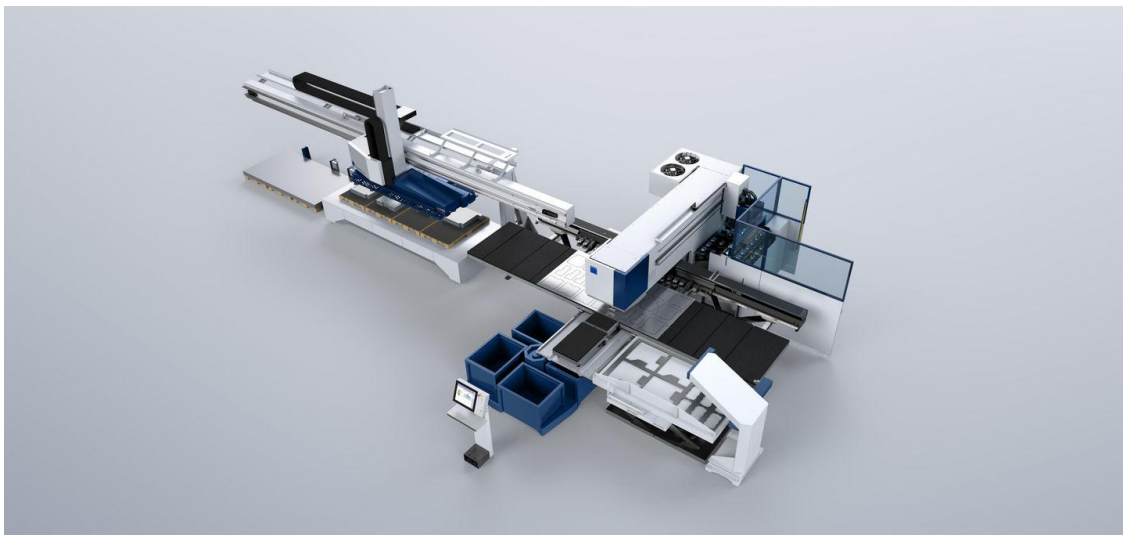
	Finish	Metal Thickness	BR 135	Face Width	Panel Length
Zinc	Natural	1.5mm	A1	h 1100mm v 1200mm	h 2985mm v 3000mm
	Pre weathered	1.5mm	A1	h 1100mm v 1200mm	h 2985mm v 3000mm
	Coloured	1.5mm	A1	h 1100mm v 1200mm	h 2985mm v 3000mm
Aluminium	Anodised materials by United Anodisers	3mm	A1	h 1100mm v 1200mm	h 2985mm v 3000mm
	Polyester Powder Coating	3mm	A2	h 1100mm v 1400mm	h 2985mm v 3000mm
	Pre Coated Painted Aluminium	3mm	A1/A2	h 1100mm v 1400mm	h 2985mm v 3000mm
Copper	Natural	1.5mm	A1	h 900mm v 900mm	h 2985mm v 3000mm
	Pre weathered	1.5mm	A1	h 900mm v 900mm	h 2985mm v 3000mm
Rimex Stainless Steel	Textured and coloured stainless steel	1.5mm	A1	h 1100mm v 1200mm	h 2985mm v 3000mm
Colour Coated Steel	-	1.5mm	A1	h 1100mm v 1200mm	h 2985mm v 3000mm

Maximum panel size that PSP can achieve is 6m long - however this would be dictated by the material selection and the width of material as sheet


The above panels sizes are based on CWCT testing for Aluminum and would require approval from a structural engineer if other materials from the above list are selected

Material Warranties are available on request on consultaion with technical team.

State-of-the-art technology



Technical Details

- | | | | |
|--|--|---|--|
|  | Fire Rated Materials and Finishes:
Solid aluminium • A2 rated non-combustible classified zinc such as Pigmento • Post powder coated classified as A2 fire rated • Pre-coated classified as A1 or A2 fire rated • Anodised aluminium classified as A1 rated |  | Fixing:
Clip or Slotted |
|  | Visible Material Face:
1mm 333 face width 3850mm wide - up to 6m on request |  | Joints:
Nominal 5-20mm vertical and horizontal joints |
|  | Finish:
Pre/post painting or anodised – ensuring they meet rigorous industry standards and are resilient to extreme weather conditions |  | Support:
PSP Matrix T Grid system |
| | |  | Ancillaries:
Fixings to enable connection between cleat and mullion and panel to mullion by PSP. Main fix from bracket to structure will be done by installers |

Terms and conditions apply.

PSP Architectural, Queen Elizabeth Drive, Oswestry, Shropshire, SY11 2UQ

T: +44 (0)1691 663340 | E: enquiries@pspuk.com